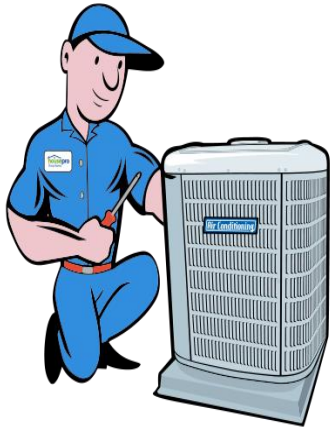


Course Flyer

UEE20111 Certificate II in Split Air Conditioning and Heat Pump Systems



Course Description

This qualification covers the installation, commissioning and de-commissioning of single head, split air conditioning and heat pumps systems to a prescribed routine where the maximum plant capacity for each system does not exceed 18 kW_r.

This includes wall hung, floor and ceiling suspended, cassette and ducted fan coil split systems and water heating heat pump systems. This qualification excludes competencies required for service, repair, maintenance, diagnostic/fault finding and electrical work or the safe and

proper installation of commercial refrigeration, air conditioning and heat pump plant and equipment.

The duration of the UEE20111 Certificate II in Split Air-Conditioning and Heat Pump Systems is 9 hours per day, 1 day per week over 41 weeks.

Job Roles and Career Pathways

The qualification is designed for students wishing to enter the Electrotechnology industry for roles including Refrigeration and Air Conditioning Trades Assistant and Split Air Conditioning Systems Installer. Full details can be found at www.training.gov.au

Entry Requirements

Course entry

There are no formal course entry requirements into this qualification.

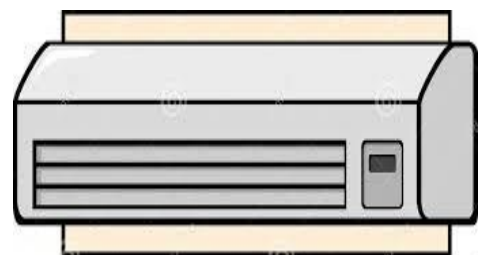
RTO Entry

This course is recommended for students who are currently employed in the Electrotechnology industry but without any formal qualifications. Students are required to have a limited knowledge and skill base in a variety of Electrotechnology contexts including making judgements, completing routine activities and taking limited responsibility in the Electrotechnology workplace. Obviously the more you know the better!

Students are required to have language, literacy and numeracy skills as required to undertake these workplace functions.

Intake

Course start dates are as listed on the RTO training schedule.



Course Flyer

UEE20111 Certificate II in Split Air Conditioning and Heat Pump Systems



Further Learning

The UEE20111 Certificate II Split Air Conditioning and Heat Pump Systems is a prerequisite for several specialised courses in the Electrotechnology Industry that will help you to further your career.

Students who complete the UEE20111 Certificate II Split Air Conditioning and Heat Pump Systems can continue their studies by advancing to the UEE32211 Certificate III in Air Conditioning and Refrigeration or any other relevant Certificate III level qualification.

Course Structure

This course comprises all the required 10 Core competency units to a total of 340 points and elective unit stream, totalling 20 points.

The following units of competency will be delivered for this qualification:

Core units

UEENEEE101A - Apply Occupational Health and Safety regulations, codes and practices in the workplace
UEENEEE137A - Document and apply measures to control OHS risks associated with electrotechnology work
UEENEEE038B - Participate in development and follow a personal competency development plan
UEENEEK142A - Apply environmentally and sustainable procedures in the energy sector
UEENEEE107A - Use drawings, diagrams, schedules, standards, codes and specifications
UEENEEE105A - Fix and secure electrotechnology equipment
UEENEEE102A - Fabricate, assemble and dismantle utilities industry components
UEENEEJ102A - Prepare and connect refrigerant tubing and fittings
UEENEEJ172A - Recover, pressure test, evacuate, charge and leak test refrigerants - split systems
UEENEEJ105A - Position, assemble and start up single head split air conditioning and water heating heat pump systems

(10 Units – Total 340 points)

Elective units

UEENECC010B - Deliver a service to customers

Volume of Learning

The volume of learning allocated to a qualification will vary depending on the level of the qualification and the experience and competency of the student. Students must complete the allocated hours for the qualification they are undertaking in order to achieve competency. If the student applies for RPL or Credit Transfer, the volume of learning may be reduced. The hours that make up the volume of learning for UEE20111 Certificate II in Split Air-Conditioning and Heat Pump Systems are:

Course Flyer

UEE20111 Certificate II in Split Air Conditioning and Heat Pump Systems



Category	Hours
Classroom Based Learning	185
Simulated/Practical Assessments	185
Workplace Learning	230
Total	600*

**The total volume of learning for a Certificate II level qualification must be at least 600 hours*

Delivery

The 11 units of competency in this course will be delivered over a period of 41 academic weeks involving a blend of classroom based, simulated and supervised workplace based training to ensure full competency.

Assessment Methods

Assessment is structured throughout the course. If students are unable to achieve competency, additional support is provided through mentoring and access to re-assessment as outlined in our policies and procedures. Assessment requires achievement across all tasks to demonstrate competence and includes:

- Written Assessment
- Portfolio of Evidence including Third party Report
- Simulated/Practical Assessment (demonstration of skills)
- Workplace observation and demonstration

Recognition of Prior Learning (RPL)

Students with prior learning and work experience can apply for RPL. Students who have completed corresponding units of competency and/or units contained within the packaging rules can apply for Credit Transfer. RPL evidence must include some of the following:

- Work Experience
- Life Experience
- Previous Study e.g. qualifications, industry training
- Professional Development Programs and/or Courses

Resources

Students will be provided with the following resource handouts required to complete the UEE20111 Certificate II in Split Air Conditioning and Heat Pump Systems upon enrolment:

- Australian Refrigeration and Air-Conditioning Vol 1 Edition 5 & Vol 2 Edition 5 by Graham Boyle

Course Flyer

UEE20111 Certificate II in Split Air Conditioning and Heat Pump Systems



Relevant Industry Standards

Superior Training Centre's delivery and assessment of the UEE20111 Certificate II in Split Air-Conditioning and Heat Pump Systems complies with the following Australian standards:

- AS1668.2

Total Course Fees

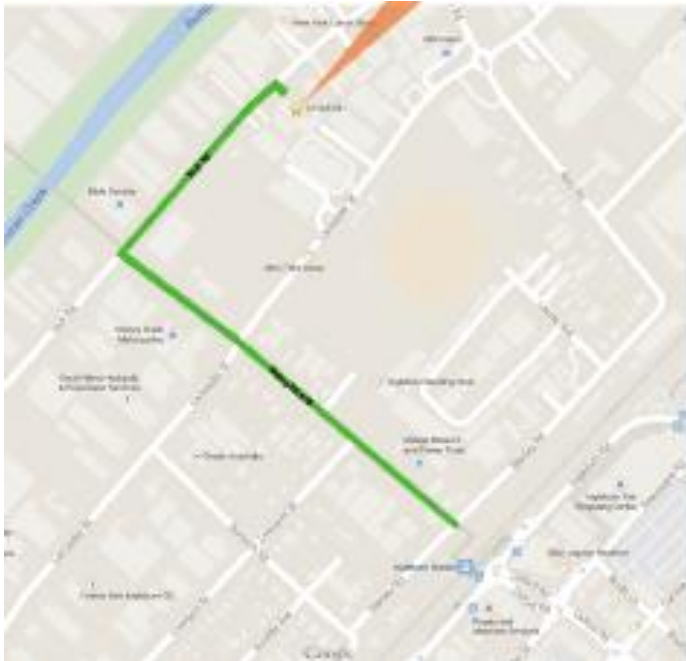
\$500.00 Deposit (non-refundable)

\$4,000.00 Course Fees (Paid by Payment Plan)

\$2,300.00 RPL Course Fee (Paid by Payment Plan)

\$500.00 Resource Fee for all books and resources

Campus Details and Facilities



Superior Training Centre is located at 1/13 York Road, Ingleburn NSW 2565.

The campus at Ingleburn provides quality teaching and learning facilities for students. The training facilities have been set up to run classroom based training sessions, to support the learning and assessment programs we offer.

The campus includes well appointed facilities that offer a comfortable learning environment.

Library Services

Ingleburn Library is available to students to assist them with their study. The library is located at 76 Oxford Rd, Ingleburn NSW 2565 and is just a 15 minute walk from the campus. 02 46454060

How to Apply

Please contact Superior Training Centre by:

☎ 02 9618 6809

✉ info@stc.nsw.edu.au

Course Flyer

UEE20111 Certificate II in Split Air Conditioning and Heat Pump Systems



Important Information – Student Handbook, Policies and Procedures, Fees and Charges

Information about our training and assessment policies and procedures are included on our website www.stc.nsw.edu.au and should be read by you, prior to enrolment in addition to the Student Handbook which is also located on our website. These documents contain important information about your training course, fees and charges including our refund policy.

Identification of Student Needs and Student Support

Student needs are declared by the applicant at the time of enrolment: the application form allows the applicant to self declare where they have learning disabilities.

Every student is interviewed either face to face or over the telephone to attempt to establish the applicant skill and knowledge levels, their current employment and how that relates to the course content and interaction.

Where language literacy and numeracy are in question, Superior Training Centre has a language literacy and numeracy assessment they may undertake to confirm their level of language, literacy and numeracy skills.

Reasonable adjustments to training and assessment will be made and additional support (e.g. LLN, assistive technology, additional training, alternative delivery and assessment modes and methods) provided where students with physical attributes or specific learning needs are identified as requiring these changes to complete their training and assessment.